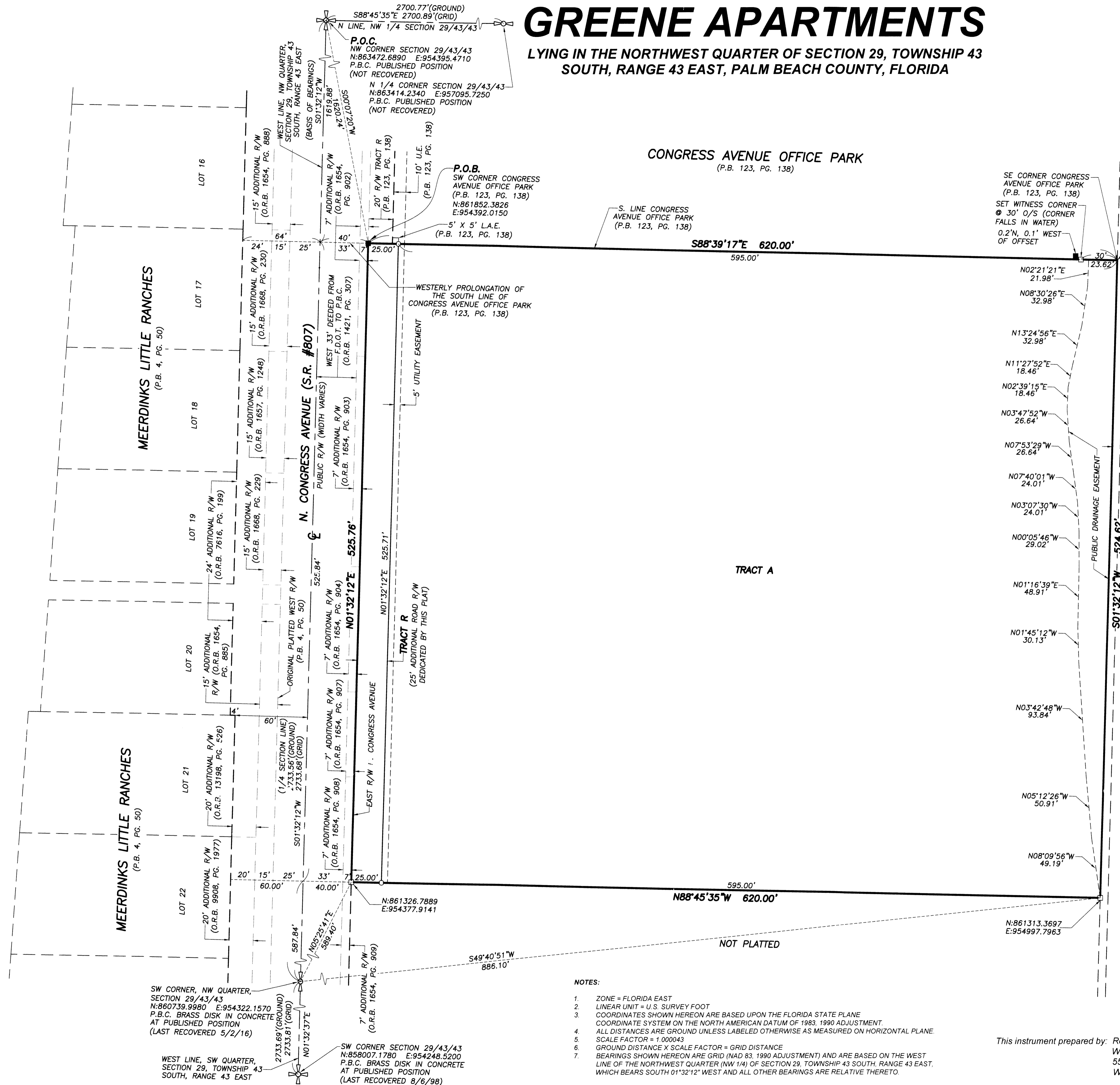
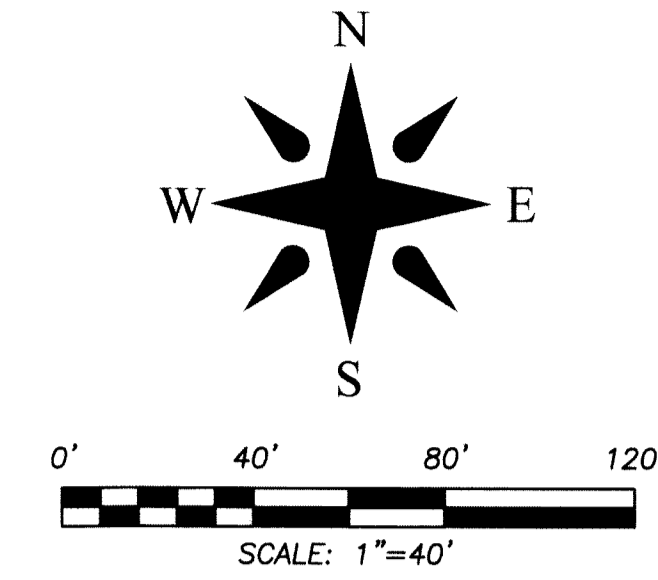


GREENE APARTMENTS

LYING IN THE NORTHWEST QUARTER OF SECTION 29, TOWNSHIP 43 SOUTH, RANGE 43 EAST, PALM BEACH COUNTY, FLORIDA

97
SHEET 2 OF 2



NOTICE:
This plat, as recorded in its graphic form, is the official depiction of the subdivided lands described herein and will in no circumstances be supplanted in authority by any other graphic or digital form of the plat. There may be additional restrictions that are not recorded on this plat that may be found in the Public Records of Palm Beach County.

NOT PLATTED
(O.R.B. 26166, PG. 1211)

ABBREVIATIONS AND SYMBOLS

- = SET 4"X4" CONCRETE MONUMENT WITH DISK STAMPED "P.R.M. LB #4569"
- = FOUND 4"X4" CONCRETE MONUMENT WITH DISK STAMPED "P.R.M. LB #6473"
- = SET 5/8" IRON ROD & CAP "WALLACE LB #4569"
- = FOUND 5/8" IRON ROD & CAP (AS NOTED)
- A.K.A. = ALSO KNOWN AS
- C/L, ☉ = CENTERLINE
- D.B. = DEED BOOK
- D.E. = DRAINAGE EASEMENT
- L.A.E. = LIMITED ACCESS EASEMENT
- LB = LICENSED BUSINESS
- L.B. = LANDSCAPE BUFFER
- NAD = NORTH AMERICAN DATUM
- O.R.B. = OFFICIAL RECORDS BOOK
- O/S = OFFSET
- P.B. = PLAT BOOK
- P.B.C. = PALM BEACH COUNTY
- PG(S) = PAGE(S)
- P.R.M. = PERMANENT REFERENCE MONUMENT
- R.P.B. = ROAD PLAT BOOK
- RGE. = RANGE
- R/W = RIGHT OF WAY
- SEC. = SECTION
- TWP. = TOWNSHIP
- U.E. = UTILITY EASEMENT
- N. = NOTHING
- E. = EASTING
- W.C. = WITNESS CORNER
- 29/43/43 = SECTION 29, TOWNSHIP 43 SOUTH, RANGE 43 EAST

- NOTES:**
1. ZONE = FLORIDA EAST
 2. LINEAR UNIT = U.S. SURVEY FOOT
 3. COORDINATES SHOWN HEREON ARE BASED UPON THE FLORIDA STATE PLANE COORDINATE SYSTEM ON THE NORTH AMERICAN DATUM OF 1983, 1990 ADJUSTMENT.
 4. ALL DISTANCES ARE GROUND UNLESS LABELED OTHERWISE AS MEASURED ON HORIZONTAL PLANE.
 5. SCALE FACTOR = 1.000043
 6. GROUND DISTANCE X SCALE FACTOR = GRID DISTANCE
 7. BEARINGS SHOWN HEREON ARE GRID (NAD 83, 1990 ADJUSTMENT) AND ARE BASED ON THE WEST LINE OF THE NORTHWEST QUARTER (NW 1/4) OF SECTION 29, TOWNSHIP 43 SOUTH, RANGE 43 EAST, WHICH BEARS SOUTH 01°32'12" WEST AND ALL OTHER BEARINGS ARE RELATIVE THERETO.

This instrument prepared by: Robert J. Cajal in the office of Wallace Surveying Corporation
5553 Village Boulevard,
West Palm Beach, Florida 33407

WALLACE SURVEYING <small>CORP. LICENSED BUSINESS # 4569</small>	
FIELD:	JOB No.: 16-1675.9
OFFICE: R.C.	DATE: DEC., 2019
C'K'D:	REF.: 16-1675-2.DWG
F.B. PG.	DWG. No.: 16-1675-2
SHEET 2 OF 2	